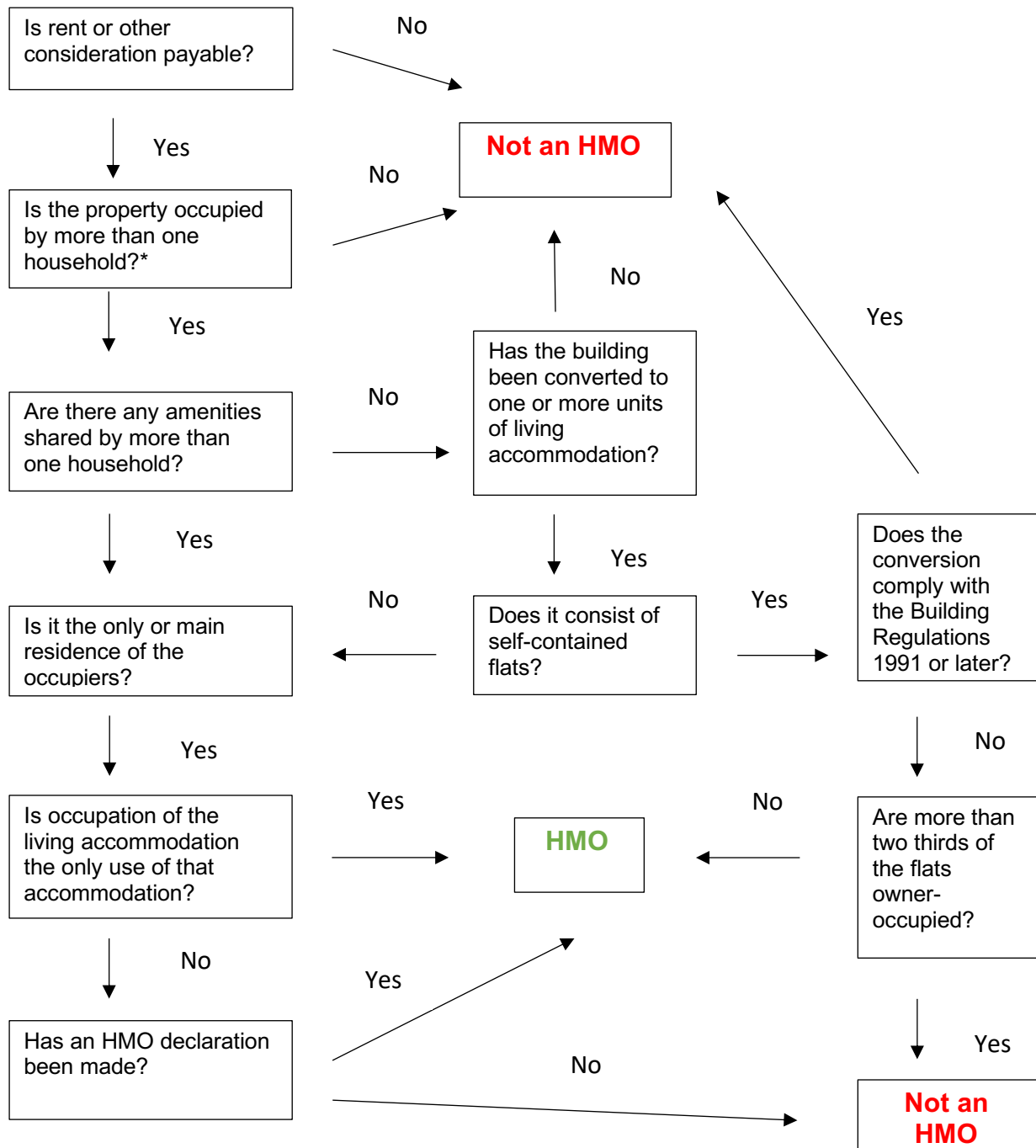


Houses of Multiple Occupation (HMOs) defined



* A household comprises persons who are all members of the same family (i.e. they are married or co-habiting, regardless of their sex or if one of them is a parent, grandparent, child, stepchild, foster child (under the Fostering Service Regulations 2002), grandchild, brother, sister, uncle, aunt, nephew, niece or cousin of the other). An employee living in the same household as the employer may be considered part of a single household.